

NEWSLETTER 14th June 2024

Habit: Humble
 Curriculum Theme: Showasis

A Message from our Principal: Ms Evry



Dear families,

During the month of June, we focus on the habit of being Humble. During this time, I remind the children to stop and notice. Too often we do not just stop and notice as we are often in such a hurry. We may repeat the same mistake or live the same arguments as we do not take the opportunity to pause. But especially during this month, I urge everyone to pause, to take a moment and to use that superpower of being humble – to notice what is happening around us, to notice what is happening to us, to notice what we are feeling, to notice what we are saying or wanting to say. And once we have done, this is a chance to make a change, a chance to admit we were wrong and apologise and a chance to be humble and learn.

Have a wonderful weekend.
 Take care,
 Ms Evry

Our Houses

Please see below our four house teams. They are all named after birds as a symbol of the school community helping them to fly. With each house they have a house colour. Next to each house is the classes linked to that house. The class will travel through the school as the same house. Throughout the year there will be colour days so please do look out for these.

Kookaburra House (Yellow)	Beech, Elm, Pear, Olive, Sycamore, Willow, Hazel, Chestnut
Skylark House (Blue)	Cypress, Olive, Sycamore, Willow, Oak, Pine, Damson, Ash, Alder
Firecrest House (Red)	Rowan, Apple, Birch, Olive, Sycamore, Willow, Acer, Apricot, Cedar, Maple
Hummingbird House (Green)	Laurel, Mulberry, Olive, Sycamore, Willow, Hawthorn, Redwood, Holly, Lilac, Cherry

Weekly Updates

Office News

To report your child's absence/lateness or if you have a general enquiry, please email primaryadmin@oasisshirleypark.org. We find that this is a quicker and more efficient way to get through to us especially during our busy periods.

Reminder Breakfast Club Fees:

We write to remind you that due to the price increase of breakfast items; we will be increasing our Breakfast club fee from **£4** to **£5** from 1st September. For parents in receipt of FSM (Free School Meals) you will now be charged **£2.50**. We ask that you please keep your account up to date or in credit.

SEN Update

If your child has a SEN Support Plan in place, we will be offering an appointment to meet with class teachers to share the plan, look at current target reviews and discuss the new targets that have been set.

This will take place after school on Wednesday 26th June.

Class teachers will be in touch with further details of your meeting.

Mrs Downton

Own Clothes Donations

We would like to say a massive thank you to those of you that contributed to the fundraising event we had last week. This was to raise funds for equipment so the children can enjoy them whilst on the playground.

We are delighted to let you know that we raised £412.31

On Tuesday, we had Leon Greenwood (GB Bobsleigh team) visit our school. He held an amazing assembly about his journey through life and ran fun and energetic fitness circuits with all the children, which they loved. Some children were able to take photos with him and these will be arriving in the next few weeks. Through this event, we were able to raise a staggering amount of over £800 for athletes in our community and the school. We want to thank you all for all your generosity and support through this. This leads us into next week where we have the Boys and Girls primary school athletics competition on Monday and Wednesday with the finals being held on Friday at Croydon Arena. We wish our budding athletes all the best.

More Exciting News



Sports day will be as follows:

On the 1st July – Rec @ Lower School (Rec – 9.15am, Yr1 – 10.20am & Yr2 – 1.45pm)

On the 2nd July – LKS2 @ Upper School 9.30am

On the 3rd July – UKS2 @ Upper School 9.30am

On the 5th July – The Orchard @ Middle School (Sycamore 9.15am and Olive 1.15pm, Willow 2.10pm)



Monday-Friday: 9am-8pm

Weekends: 10am-3pm

Email the team

on info@prisonersfamilies.org

Or fill in a contact form and request a call back at prisonersfamilies.org.

Do you have a family member or loved one in prison?

Do you need confidential support?

We have staff members with lead responsibility who may be able to help you:

Please do not hesitate to contact Ms Clarke at our Lower school or Ms Eves at the middle school.



Each week we have a prize draw for children who have had 100% attendance for the week.

This week's winners are Caleb -Olive Class, Chloe -Cherry Class, David -Apricot Class, Evelina -Elm Class, Rayyan- Hawthorn Class, Okiki -Hazel Class, Sarah- Maple Class and Dexter -Acer Class.

The next week's winner could be you!

Attendance is very important to us all at OASP because good attendance improves each child's academic progress and allows them to maximise access to all the different opportunities that we provide weekly. If your child is going to be absent for any reason, please do let us know and then our Attendance Team will work with you to provide the support that child & family needs.

We send weekly Shout Outs to all children who have 100% attendance. These children are then entered into the prize draw and a winner is selected for each year group. You can also check your child's attendance on MCAS. This will show you the percentage of attendance that your child has managed each week. It also shows you the mark that goes onto the register when we have not been notified of a reason for absence.

We encourage parents to limit absences throughout term time and to plan medical appointments ahead and outside of school hours.

Thank you for your continued support for helping us to raise attendance at OASP! Let's all be Attendance Champions.

More Attendance News

At OASP we are tackling attendance and punctuality with the highest priority because we believe success at school can only be achieved with good attendance and positive learning habits. Please see below some useful information that may be helpful to you.

We understand that some illnesses are unavoidable and that family circumstances may affect a child's overall attendance at particular periods. However, it is a matter of real concern if this leads to lengthy, sporadic, or irregular absences. Research shows that academic progress is significantly disrupted when attendance is poor.

Ways to support the improvement of attendance and punctuality.

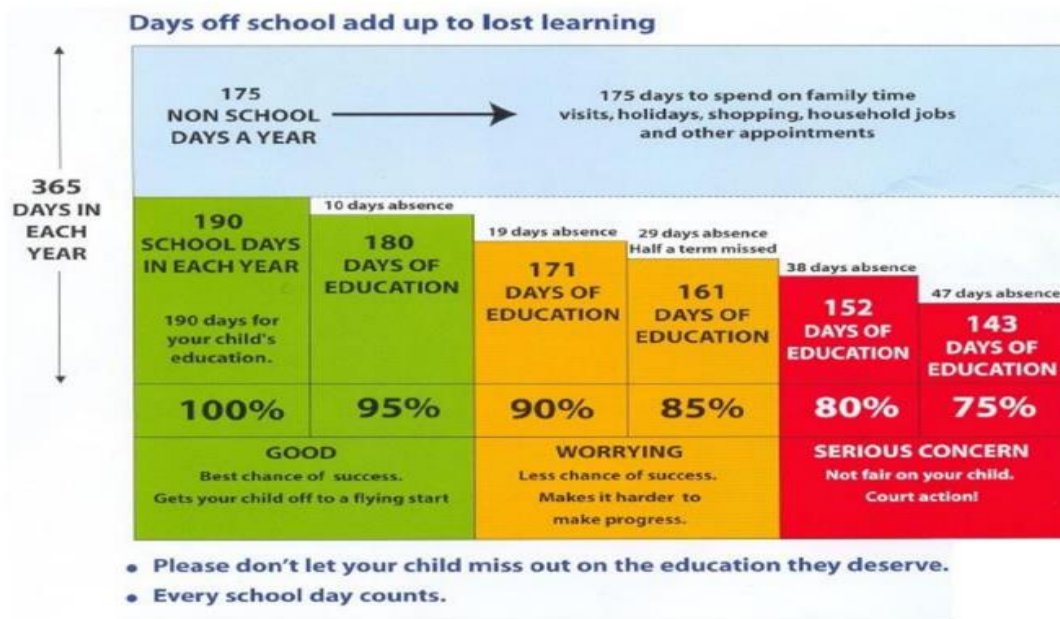
- ***A good bedtime routine.***
- ***No screens before bedtime.***
- ***Have uniforms and bags packed the night before.***
- ***Use an alarm clock rather than a phone.***
- ***Use a travel app to help plan journey times.***

Attendance is measured in both the morning and afternoon sessions for each school day, and we **may** ask you to provide medical evidence **if we are concerned about the level of attendance.**

Ways to evidence illness:

- a letter from your doctor, hospital, or an appointment card
- a screenshot of an online medical call or incoming phone call from your GP/111
- a copy of your child's prescription

Please find below a diagram that shows the impact low attendance has on your child's education and life chances.



Please be mindful of the new government regulations being implemented from **August 2024**.
 Thanks for your continued support with Attendance.
 The Attendance Team

Nursery News



This week, the children have enjoyed exploring different modes of transports by reading stories and learning why and how they are used. Next week, we will continue to discuss vehicle parts, such as wings, carriage, tyres and sails by reading adventure stories and playing games. In maths, we will practice creating some number stories to explore the one more and one less. For example, 'There are four people on the bus, one person gets off. Now, how many are left?'

Other notices

THANK YOU! We would like to say a big THANK YOU to parents/ carers who volunteered for our morning Library visit. Thanks to you we enjoyed a wonderful story session in our local library.

Ashburton Library Visit – PM group : We have rescheduled the afternoon group library visit, which was cancelled by the library due to double bookings. We apologize for any inconvenience this may have caused you and your child. The children will visit Ashburton Library to explore the local area and learn how to find books in the library. Children are required to wear their school uniform as usual. We greatly appreciate the help of parents and carers. We rely on the support of additional adults for such trips to take place. We warmly welcome parent volunteers to join us. If you would like to volunteer, please inform your class teacher by Monday, June 24th.

The trip will take place on **Thursday 27th June 2024**
Afternoon group will be leaving at 13.45pm and returning at 14.45pm

Key dates:

- Fri 21st June: INSET Day school closed to students**
- Thu 27th June: Afternoon group Ashburton Library Visit**
- Fri 19th July: Last day of term (normal finish time)**

If you need to contact the Nursery, please message us via email the address below: spa.nursery-stf@oasisshirleypark.org



Reception News

It has been another busy week in Reception. Well done Apple class for their brilliant class assembly! The children have enjoyed learning about how we can protect ourselves from germs, they particularly enjoyed our experiment in which we used soap and pepper to demonstrate how washing our hands is so important to keep germs away. In Phonics we are continuing to recap the digraph sounds and looking at the phase 4 tricky words and our consonant blends such as 'gl' and 'br'. In drawing club, we will be using the brilliant story Stuck by Oliver Jeffers to spark our imaginations and create our own ideas about what else could get stuck in the tree. In maths we will be learning our number bonds to 5 and writing these as number sentences.

Please find your child's P.E Day below. Children can come to school already dressed in their P.E kit on their P.E Day.

Apple Class: Monday

Cherry Class: Tuesday

Pear Class: Wednesday

Reading Books go home on a Friday. Please could we ask that they be returned the following Wednesday.

Key Dates:

Fri 21st June: INSET Day school closed to students

Fri 28th June: Cherry Class Assembly (9am)

Mon 1st Jul: – Reception Sports Day

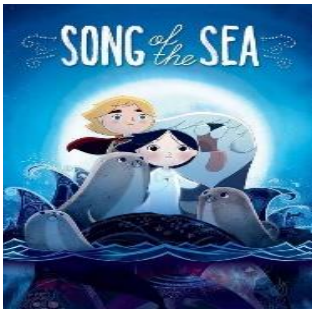
Fri 5th July: Pear Class Assembly (9am)

Fri 12th Jul: Reception graduation

Fri 19th July: Last day of term (normal finish time)

If you need to contact the reception team, you can do so by sending your child's class teacher a message on ClassDojo or emailing us at- SPA.Reception-STF@oasisshirleypark.org
Have a wonderful weekend!

Year 1



We've had a lovely week in Year 1 with lots of preparations for our Showasis performances. The children are working extremely hard, and we can't wait for you to see them soon. Details of the dates and times have been provided in the key dates below.

Next week, in English lesson, we will be writing our own stories based on the film, 'Song of the Sea'. In maths, we will be comparing numbers, and in P.E, we will be creating our own dances. In our afternoon sessions we will be spending time practicing our Showasis performances.

On **Thursday 11th July**, the children will be going on their final trip of the year to Lloyd Park. Whilst we are there, we will be looking for wildflowers and having a picnic. If you would like to volunteer to help us on the day, please speak to your child's class teacher. We will be leaving the school from 9:00am and returning at 2pm.

Year 1 PE Days

Apricot Class: Monday and Wednesday

Damson Class: Tuesday and Friday

Mulberry Class: Thursday and Friday.

Please could the children come to school in their P.E kits on those days.

Key Dates:

Fri 21st June: INSET Day school closed to students

Tues 25th June: Damson Class Showasis – 2:30pm

Wed 26th June: Mulberry Showasis – 2:30pm

Thu 27th June: Apricot Showasis – 2:30pm

Thu 11th July: Year 1 Trip to Lloyd Park

Fri 19th July: Last day of term (normal finish time)



Year 2

Once again, the year 2 team have had another brilliant week watching our outstanding pupils celebrating their awesome achievements together. This week, pupils were very excited to meet Leon Greenwood, a member of the British Bobsleigh Team. Pupils also enjoyed participating in a special circuit PE session delivered by the athlete. During next week, in English pupils will be writing an effective character description from the book *The Tear Thief*. In maths, pupils will be further enhancing their time skills. In history, pupils will be sharing their amazing Henry VIII knowledge. In science, pupils will be learning about a rainforest habitat. During our indoors PE sessions pupils will explore how to move and respond to music and throughout our outdoors sessions pupils will be exploring rolling and throwing a ball with accuracy. In poetry, pupils will be reciting the poem, *The Seagulls* by Michael Rosen.

Weather: As weather conditions continue to be unpredictable, please ensure that all children are coming into school with a labelled coat.

Lunches: We are a nut free school; therefore, we ask that anything that may contain nuts is not included in pack lunches please.

PE: **Ash/Holly:** Tuesday and Thursday **Elm/Cedar:** Monday and Wednesday

Key Dates:

Fri 21st June: INSET Day school closed to students

Mon 1st Jul: Yr2 Sports Day 1.45-2.45

Wed 10th Jul: 2pm - Holly and Ash Showasis

Thu 11th Jul: 2pm - Cedar and Elm Showasis

Fri 19th July: Last day of term (normal finish time)



Year 3

We've had another busy week in Year 3 as all the classes experienced their first day over at the Middle School. This has gone exceptionally well, and we thank you for your cooperation. As a reminder, please drop off and pick your child up from the Middle School on their allocated day. We also had our visitor, Leon Greenwood, who is a team GB Bob Sleigh athlete. Each class was fortunate enough to spend some time with Leon to complete a fitness session.

Next week, in our writing sessions, we will be writing our own versions of 'The Blue Umbrella' before editing our work. In maths, we will be continuing to learn statistics and will be looking at how to draw bar charts as well as collecting and representing data. In history, we will discover how the Tudor era began.

Year 3-4 Transitions Day at Middle School

Monday	Hawthorn
Wednesday	Pine
Thursday	Chestnut
Friday	Birch

PE days: Please ensure your child is dressed in the correct P.E. uniform in line with our school's policy on their P.E. days.

Chestnut: Monday & Wednesday

Hawthorn: Tuesday & Thursday

Pine: Monday & Thursday

Birch: Tuesday & Wednesday

Lunches: We are a nut free school; therefore, we ask that anything that may contain nuts is not included in their fruit snack or pack lunch. **Please ensure your children only have *water* in their bottles. No juices or flavoured water is allowed.** Thank you in advance.

Key dates:

Fri 21st June: INSET Day school closed to students

Tues 2nd Jul: Year 3 Sports Day at Upper School, 9am – 12pm

Wed 3rd Jul: Hawthorn and Birch trip to the Mosque

Tues 9th Jul: Pine and Chestnut Showasis, 9:15am

Wed 10th Jul: Pine and Chestnut trip to the Mosque

Thu 11th Jul: Hawthorn and Birch Showasis, 9:15am

Fri 19th July: Last day of term (normal finish time)

Have a lovely weekend!

Year 4

We hope you have had a good week. We wanted to remind you of the importance in ensuring your child is reading every evening. It is important for their reading stamina, their vocabulary knowledge and inference skills.

Repeated message-thank you to all the families that are up to date with the payment of the workshops. If you have not done so-please ensure you have otherwise this will affect future enrichment activities for the year group. Payments should be made via MCAS, if you need support accessing this-please contact the main office. Next week, the children will continue reading the story called Flood by Alvaro F. Villa, focusing on how to write a newspaper report about a flood using their own ideas.

In Maths, the children will start learning how to interpret graphs focusing on line graphs.

Please ensure that the children come into school with the correct kit. PE kit is: *Black shorts or joggers; Plain white t-shirt; Purple school jumper; Plain white t-shirt; trainers.*

PE Days:

Laurel Class-Monday and Tuesday

Cypress Class- Wednesday and Thursday

Rowan Class-Tuesday and Thursday

Hazel Class-Monday and Wednesday

We hope you have a restful weekend.

Key Dates:

Fri 21st June: INSET Day school closed to students

Wed 3rd July: Class Assembly: Hazel Class at 2.15pm

Thu 4th July: Class Assembly: Rowan Class at 2.30pm

Thu 11th July: Class Assembly: Laurel Class at 2.15pm

Fri 12th July: Class Assembly: Cypress class at 2.15pm

Fri 19th July: Last day of term (normal finish time)

Year 5

This week we have continued our work on Kensuke's Kingdom. We have read the beginning of our stories and Micheal has now been marooned. We have begun to write our own stories inspired by the narrative ahead of our big write next week.

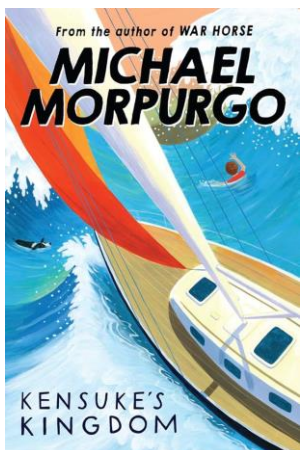
In Maths, we have continued our work on decimals looking at adding and subtracting whilst crossing zero. Please ensure your children are practice their place value and timetables over the weekend.

In RE, we are continuing to learn about Hinduism. We have been discussing various religious celebrations and their importance.

In PE, Year 5's topics are athletics and dance, we have been practicing our shotput skills in the lead up to our sports day later this term.

In History we have begun our unit on the Tudors and are looking forwards to find out more as the term progresses. We have also had our trip to Croydon marching as suffragettes to end out last unit. The children enjoyed this greatly and are very proud of them for taking part.

Next week is testing week please ensure that the students are in on time and ready to begin.



The PE lessons for each class are as follows:

PE kit should be a plain white t-shirt, black joggers or shorts and school sweatshirt.

The PE lessons for each class are as follows:

Alder class - Mondays (indoor) and Wednesday (outdoor)

Lilac class – Tuesdays (outdoor) and Thursdays (indoor)

Maple class - Wednesdays (indoor) and Fridays (outdoor)

REMINDERS:

iPad's need to be 100% charged and ready for learning every day.

Key dates:

Fri 21st June: INSET Day school closed to students

Fri 28th June: Showasis 2pm

Wed 3rd July: Sports Day 9.30am

Fri 19th July: Last day of term (normal finish time)

Year 6

This week, rehearsals have been going well for our end of year performance for 'Shakespeare Rocks'. More information about performance dates and times will be in a forthcoming newsletter. Thank you for your support with the cake sale last week. It was very successful, and we were able to raise around £400! In maths, we are working on budgeting and how to plan a holiday without overspending. The children met Team GB Olympian Leon Greenwood this week and had the opportunity to work out with him and listen to him given an inspiring talk about how achieves his goals by 'visualising it, working for it and making it happen.' Thank you for all sponsored donations towards this event.

In our PE lessons, we have been focussing on athletics and next week, some children will be taking part in the Croydon Schools athletics championships. We wish those competitors well.

PE Days

Redwood & Beech - Tuesday, Thursday

Acer & Oak - Monday, Wednesday

We do hope you are well and enjoyed the wonderful Easter break.

Key dates:

Fri 21st June: INSET Day school closed to students

Fri 19th July: Last day of term (normal finish time)

The Orchard

Next week's book is **Tiddler the story-telling Fish**, by Julia Donaldson. The story of Tiddler the tiny fish, who everyday would dream up tall tales to tell his classmates why he was always late for school. Until one day his daydreaming got him lost and caught up in his very own tall tale; but luckily his tales help him find his way back home. In **maths**, we will be initiating the concepts of **position and direction**. This term in **PE**, The Orchard children are practising **object control-strike & field**. In **History** we started learning about Henry VIII and the Tudors.

PE lessons:

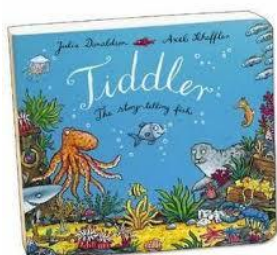
Willow – Monday

Sycamore - Wednesday

Olive – Friday

Swimming at South Norwood Pool:

Willow and Sycamore 19.06.2024



Please note that Sycamore will go weekly each Wednesday and Olive/Willow will go on alternate weeks.

On swimming days, please send in the following: towel, swimming costume, bag for wet clothes, spare underwear if coming into school wearing swim costume underneath uniform. Goggles and hat if preferred but not essential.

Key Dates:

Fri 21st June: INSET Day school closed to students

Fri 19th July: Last day of term (normal finish time)

Remember: - Should you need to contact us, you can contact the Inclusion Team by email through: SPA.Inclusion.STF@oasisshirleypark.org

All photos obtained and snipped from Google